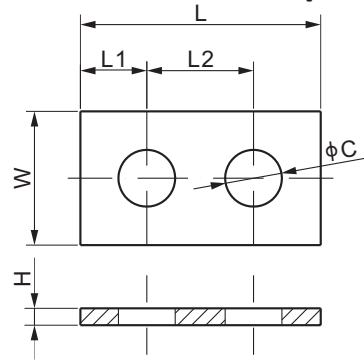
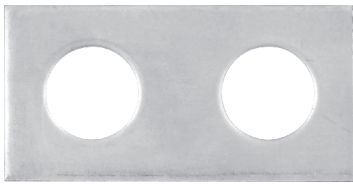


Load Cell Spacer, Stainless Steel



DIMENSIONS

PART NUMBER	LOAD CELL CAPACITY *	C	H	L	L1	L2	W	Self Weight Approx.(kg)
	kg/mm							
SPACERSS-1/2	100-2,000	13.5	4	57.20	15.8	25.4	31.8	0.03
SPACERSS-3/4	2,500-5,000	19.8	4	76.20	19.1	38.1	38.1	0.07
SPACERSS-1	10,000	26.2	5	101.6	25.4	50.8	50.8	0.15
	lb/inch							
SPACERSS-1/2	100-SE5,000	0.53	0.16	2.25	0.62	1.00	1.25	0.07
SPACERSS-3/4	5,000; 10,000	0.78	0.16	3.00	0.75	1.50	1.50	0.15
SPACERSS-1	15,000; 20,000	1.03	0.20	4.00	1.00	2.00	2.00	0.33

* Refer to 563 series

AVAILABLE OPTIONS

- Alloy Steel: SPACER-xx