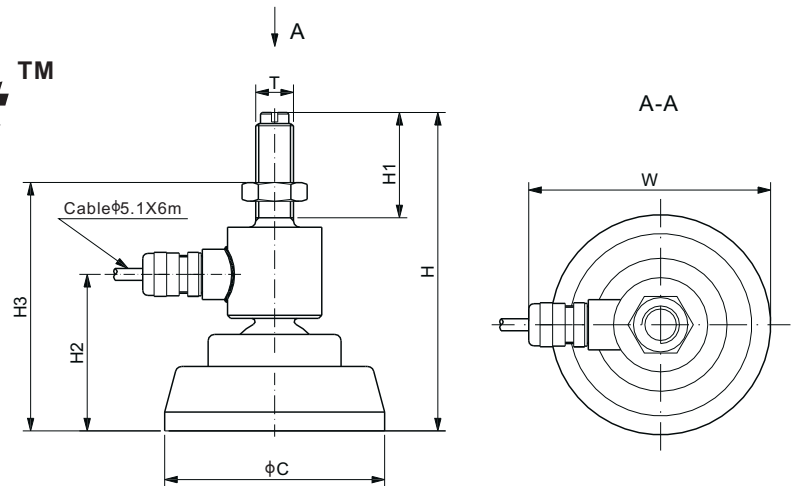


# 106MH-F



Alloy Steel



CE RoHS

## DIMENSIONS

RATED CAPACITY	C	H	H1	H2	H3	W	T
<b>t/mm</b>							
0.5-1	70.0	101.3	33.5	49.8	74.0-97.0	77.0	M12×1.75
2	70.0	117.8	50.0	49.8	76.0-114.0	77.0	M16×2.00
5	80.0	132.8	55.0	59.8	87.0-127.0	82.0	M20×2.50
10	100.0	187.3	80.0	81.3	108.0-180.0	96.0	M24×2.00
<b>Klb/inches</b>							
1-2.5	2.76	3.99	1.32	1.96	2.91-3.82	3.03	1/2-20 UNF
5-10	3.15	5.23	2.17	2.35	3.43-5.00	3.23	3/4-16 UNF
20	3.94	7.37	3.15	3.20	4.33-7.09	3.78	1-14 UNS

## SPECIFICATIONS

Full Scale Output	2.0 ± 0.25% mV/V	Recommended Excitation	10V (15V Maximum)
Zero Balance	± 0.02 mV/V	Insulation Resistance	> 2 [ 50V DC ] GΩ
Non-linearity	< ± 0.050%	Compensated Temperature Range	-10°C to 50°C / 14°F to 122°F
Repeatability	< ± 0.030%	Safe Overload	150% of full scale
Hysteresis Error	< ± 0.050%	Breaking Overload	300% of full scale
Creep in 30 min.	< ± 0.030%	Seal Type / IP Rating	Welded Seal / IP67
Input Resistance	380 Ω ± 20	Cable Color Code	Exc+ Red      Exc- Black
Output Resistance	350 Ω ± 3		Sig+ Green     Sig- White
Element Material	Alloy Steel		Shield Bare

## PART NUMBER

Rated Capacity	Part No.	Shipping Weight (kg) Approx.
500kg.....	106MH-F-500kg.....	0.8
1t.....	106MH-F-1t.....	0.8
2t.....	106MH-F-2t.....	0.9
5t.....	106MH-F-5t.....	0.8
10t.....	106MH-F-10t.....	0.8
1Klb.....	106MH-F-1Klb.....	1.2
2.5Klb.....	106MH-F-2.5Klb.....	1.2
5Klb.....	106MH-F-5Klb.....	1.2
10Klb.....	106MH-F-10Klb.....	2.3
20Klb.....	106MH-F-20Klb.....	2.3