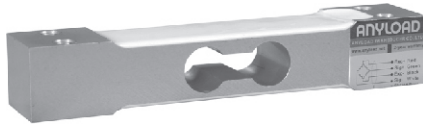


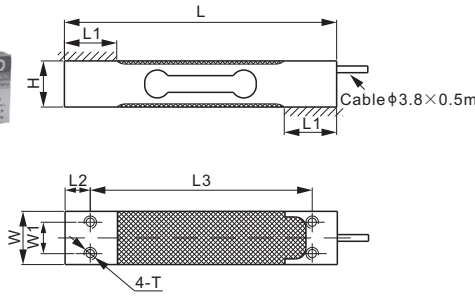
108BA



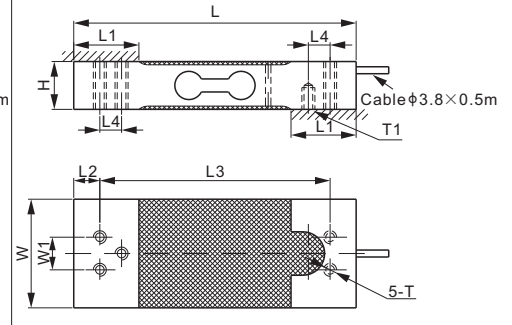
Aluminum



Capacity: 3-75kg



Capacity: 100kg; 150kg



DIMENSIONS

| RATED CAPACITY | H | L | L1 | L2 | L3 | L4 | W | W1 | T | T1 |
|---|------|-------|------|------|-------|------|------|------|----|--------------|
| kg/mm | | | | | | | | | | |
| 3-30 | 22.0 | 130.0 | 25.0 | 12.0 | 106.0 | - | 25.4 | 15.0 | M6 | - |
| 35 | 22.0 | 130.0 | 25.0 | 12.0 | 106.0 | - | 30.0 | 15.0 | M6 | - |
| 40; 50; 60; 75 | 22.0 | 130.0 | 30.0 | 12.0 | 106.0 | - | 38.5 | 15.0 | M6 | - |
| 100; 150 | 22.0 | 130.0 | 30.0 | 12.0 | 106.0 | 10.0 | 50.0 | 15.0 | M6 | M6 Depth10 |
| lb/inches (conversion of above dimensions) | | | | | | | | | | |
| 6.61-66.14 | 0.87 | 5.12 | 0.98 | 0.47 | 4.17 | - | 1.00 | 0.59 | M6 | - |
| 77.16 | 0.87 | 5.12 | 0.98 | 0.47 | 4.17 | - | 1.18 | 0.59 | M6 | - |
| 88.18; 110.23; 132.28; 165.35 | 0.87 | 5.12 | 1.18 | 0.47 | 4.17 | - | 1.52 | 0.59 | M6 | - |
| 220.46; 330.69 | 0.87 | 5.12 | 1.18 | 0.47 | 4.17 | 0.39 | 1.97 | 0.59 | M6 | M6 Depth0.39 |

SPECIFICATIONS

| | | | |
|-------------------|----------------|------------------------------|-------------------------------|
| Type | YZ108 | Recommended Excitation | 10V (15V Maximum) |
| Full Scale Output | 2.0 ± 10% mV/V | Reference Max. Platform Size | 400×400 mm |
| Zero Balance | ± 0.02 mV/V | Insulation Resistance | >2 [50V DC] GΩ |
| Non-linearity | < ± 0.017% | Nominal Temperature Range | -10°C to 40°C / 14°F to 104°F |
| Repeatability | < ± 0.017% | Safe Overload | 150% of full scale |
| Hysteresis Error | < ± 0.017% | Breaking Overload | 300% of full scale |
| Creep in 30 min. | < ± 0.023% | Seal Type / IP Rating | Environmentally Sealed / IP66 |
| Input Resistance | 415Ω ± 15 | Cable Color Code | Exc+ Red Exc- Black |
| Output Resistance | 350Ω ± 3 | | Sig+ Green Sig- White |
| Element Material | Aluminum | | Shield Bare |

PART NUMBER

| Rated Capacity | Part No. | Shipping Weight (kg) Approx. |
|-----------------|---------------|------------------------------|
| 3kg | 108BA-3kg | 0.2 |
| 6kg | 108BA-6kg | 0.2 |
| 7kg | 108BA-7kg | 0.2 |
| 10kg | 108BA-10kg | 0.2 |
| 15kg | 108BA-15kg | 0.2 |
| 20kg | 108BA-20kg | 0.2 |
| 30kg | 108BA-30kg | 0.2 |
| 35kg | 108BA-35kg | 0.2 |
| 40kg (W=30mm) | 108BA-40kg | 0.2 |
| 40kg (W=38.5mm) | 108BA-W1-40kg | 0.2 |
| 50kg | 108BA-50kg | 0.26 |
| 60kg | 108BA-60kg | 0.26 |
| 75kg | 108BA-75kg | 0.26 |
| 100kg | 108BA-100kg | 0.35 |
| 150kg | 108BA-150kg | 0.35 |

INTERCHANGEABLE PRODUCTS

| Manufacturer | Model |
|------------------------|---------------|
| Coti Global | CG-22 |
| Mettler-Toledo | MT1022 |
| HBM | PW6C3 |
| HBM | PW6K |
| Rice Lake | RL1521A |
| Vishay Celtron | LPS ME 6-35kg |
| Vishay TedeA-Huntleigh | 1022 |

AVAILABLE OPTIONS

■ 1m cable

10kg-150kg: OIML C3, Y=4 300

SINGLE POINTS