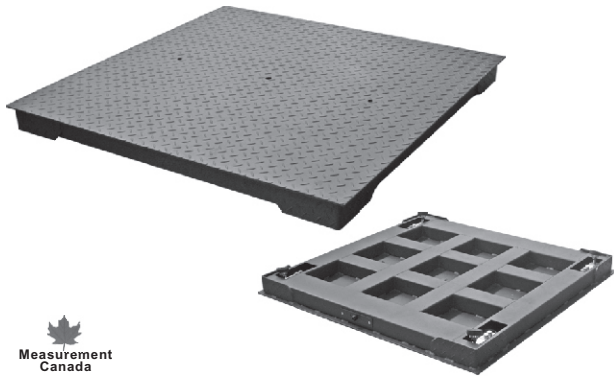


Floor Scale, Mild Steel



Features:

- Heavy-duty industrial design
- 5mm thick deck plate with rugged diamond safety tread
- Rigid steel channel frame
- Factory finished corner error adjustment
- Threaded eyebolt holes for easy lifting (eyebolts included)

Complete Set Includes:

- 4 high accuracy IP67 load cells, model 563YH (OIML MAA C6, Y=8 500 and NTEP 1:5 000 Class III, Multiple Cell)
- 4 swivel mild steel feet with removable rubber base (model: AMF)
- 2 eyebolts
- 1 aluminum junction box, model J04EA
- 1 level bubble

DIMENSIONS

| PART NUMBER | RATED CAPACITY | LOAD CELL CAPACITY | SIZE IN INCHES (W x L x H) | WEIGHT |
|--------------------------------------|----------------|--------------------|----------------------------|--------------|
| Painted Mild Steel | | | | |
| FSP3x3-500kg | 500kg | 563YH-300kg | 36" x 36" x 4" | 72kg /159 lb |
| FSP3x3-1t | 1t | 563YH-500kg | 36" x 36" x 4" | 72kg /159 lb |
| FSP3x3-2.5t | 2.5t | 563YH-1t | 36" x 36" x 4" | 72kg /159 lb |
| FSP3x3-1Klb | 1Klb | 563YH-500lb | 36" x 36" x 4" | 72kg /159 lb |
| FSP3x3-2Klb | 2Klb | 563YH-1Klb | 36" x 36" x 4" | 72kg /159 lb |
| FSP3x3-5Klb | 5Klb | 563YH-2.5Klb | 36" x 36" x 4" | 72kg /159 lb |
| ----- | | | | |
| FSP4x4-500kg | 500kg | 563YH-300kg | 48" x 48" x 4" | 120kg/265 lb |
| FSP4x4-1t | 1t | 563YH-500kg | 48" x 48" x 4" | 120kg/265 lb |
| FSP4x4-2.5t | 2.5t | 563YH-1t | 48" x 48" x 4" | 120kg/265 lb |
| FSP4x4-5t | 5t | 563YH-2t | 48" x 48" x 4" | 120kg/265 lb |
| FSP4x4-1Klb | 1Klb | 563YH-500lb | 48" x 48" x 4" | 120kg/265 lb |
| FSP4x4-2Klb | 2Klb | 563YH-1Klb | 48" x 48" x 4" | 120kg/265 lb |
| FSP4x4-5Klb | 5Klb | 563YH-2.5Klb | 48" x 48" x 4" | 120kg/265 lb |
| FSP4x4-10Klb | 10Klb | 563YH-4Klb | 48" x 48" x 4" | 120kg/265 lb |
| ----- | | | | |
| FSP5x5-2.5t | 2.5t | 563YH-1t | 59" x 59" x 4" | 200kg/441 lb |
| FSP5x5-5t | 5t | 563YH-2t | 59" x 59" x 4" | 200kg/441 lb |
| FSP5x5-5Klb | 5Klb | 563YH-2.5Klb | 59" x 59" x 4" | 200kg/441 lb |
| FSP5x5-10Klb | 10Klb | 563YH-SE5Klb | 59" x 59" x 4" | 200kg/441 lb |
| ----- | | | | |
| FSP4x6-2.5t | 2.5t | 563YH-1t | 48" x 72" x 4" | - |
| FSP4x6-5t | 5t | 563YH-2t | 48" x 72" x 4" | - |
| FSP4x6-5Klb | 5Klb | 563YH-2.5Klb | 48" x 72" x 4" | - |
| FSP4x6-10Klb | 10Klb | 563YH-SE5Klb | 48" x 72" x 4" | - |
| ----- | | | | |
| FSP5x7-2.5t | 2.5t | 563YH-1t | 59" x 84" x 4" | - |
| FSP5x7-5t | 5t | 563YH-2t | 59" x 84" x 4" | - |
| FSP5x7-5Klb | 5Klb | 563YH-2.5Klb | 59" x 84" x 4" | - |
| FSP5x7-10Klb | 10Klb | 563YH-SE5Klb | 59" x 84" x 4" | - |
| ----- | | | | |
| Hot Dip Galvanized Mild Steel | | | | |
| FSP4x4-5Klb-GI | 5Klb | 563YH-2.5Klb | 48" x 48" x 4" | 138kg/304 lb |

OPTIONAL ACCESSORIES

- Indicators (page 151/154)
- Ramps (page 174)
- Bumper Guards (page 175)
- Scale Base Mounting Plate (page 180)

- Measurement Canada Approval for
 - 3'X3'-5Klb
 - 3'X4'-5Klb
 - 4'X4'-5Klb
 - 4'X5'-5Klb
 - 5'X5'-5Klb

- NTEP 1: 5 000 Class III Approval for
 - 3'X3'-5Klb
 - 4'X4'-5Klb
 - 4'X4'-10Klb