

102DH

Double Ended Beam

IP67

ALLOY STEEL

Options:

- FM, ATEX, IECEx Approved

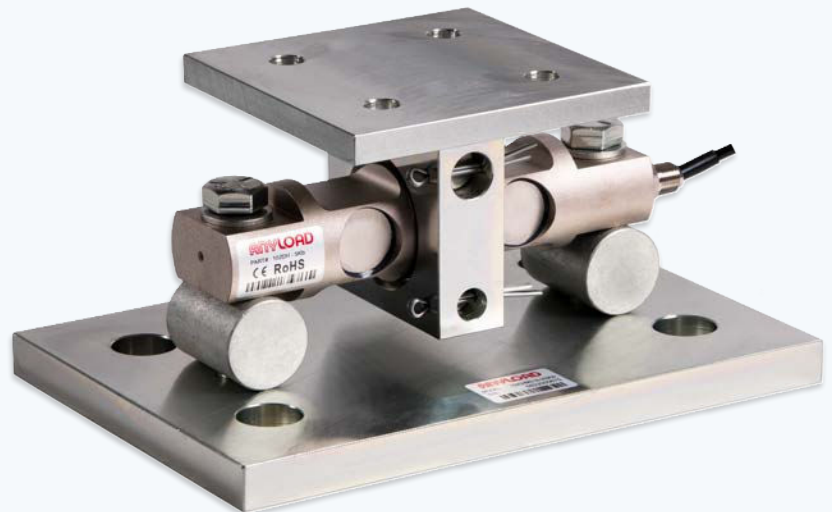


102DHM3

Compression Weigh Module

Features:

- Center pivoted and self-checking with anti-lifting
- Sliding pin design for thermal expansion and contraction





Complete Kit Includes

- ✓ 102DH Load Cells
- ✓ 102DHM3 Mounts
- ✓ Junction Box (Signal or Exc)
- ✓ Load Cell Cable

Features

- Capacities (per module) 5Klb-250Klb
- Center pivoted and self-checking with anti-lifting
- Sliding pin design for thermal expansion and contraction

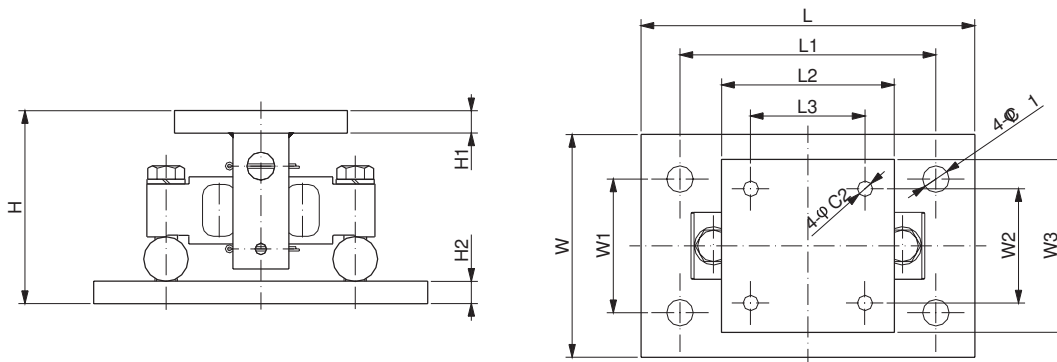
Applications

- Medium to heavy capacity tanks & hoppers

J-Box Options: Signal or Excitation / Aluminum, Stainless Steel or Fiberglass Enclosure

Part Number / Capacity	J-Box	Cable
3 Module Kit	*J-Box (specify model when ordering)	
MK3-102DHM3- 10Klb-S	J04SA-16	1 roll (65ft/20m)
MK3-102DHM3- 20Klb-S		
MK3-102DHM3- 30Klb-S		
MK3-102DHM3- 40Klb-S		
MK3-102DHM3- 50Klb-S		
MK3-102DHM3- 60Klb-S		
MK3-102DHM3- 75Klb-S		
4 Module Kit	*J-Box (specify model when ordering)	
MK4-102DHM3- 10Klb-S	J04SA-16	1 roll (65ft/20m)
MK4-102DHM3- 20Klb-S		
MK4-102DHM3- 30Klb-S		
MK4-102DHM3- 40Klb-S		
MK4-102DHM3- 50Klb-S		
MK4-102DHM3- 60Klb-S		
MK4-102DHM3- 75Klb-S		

Drawings



Dimensions (inches)

Capacity	C1	C2	H	H1	H2	L	L1	L2	L3	W	W1	W2	W3
5-20Klb	1.06	0.56	5.30	0.50	0.75	11	8.00	5.50	3.00	7.50	4	3.00	5.50
30-75Klb	1.19	0.68	8.41	0.75	0.94	15	11.5	7.76	5.12	10.0	6	5.12	7.76
100Klb	1.38	0.81	9.27	1.00	1.25	18	14.0	10.0	7.50	12.0	9	7.50	10.0
150Klb	1.38	0.81	9.62	1.00	1.25	18	14.0	10.0	7.50	12.0	9	7.50	10.0
200-250Klb	1.88	1.06	14.58	1.25	1.50	24	20.0	12.0	9.0	12.0	8	9.00	12.0