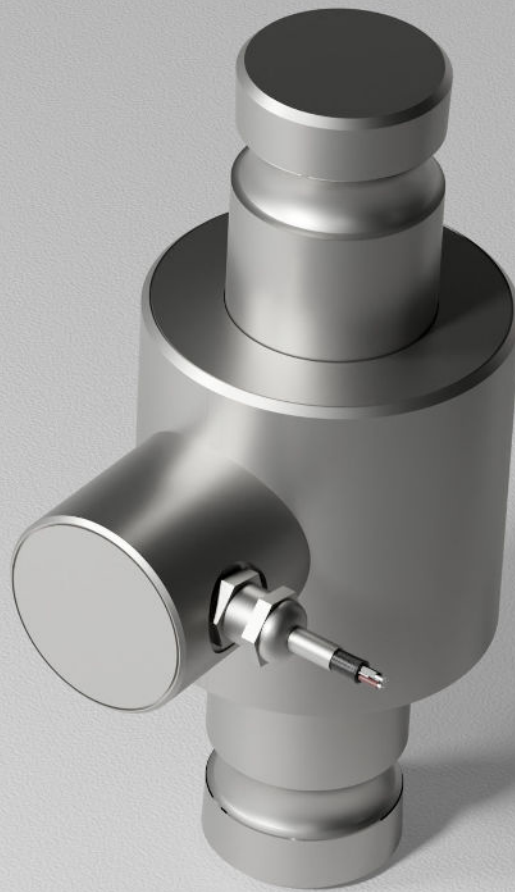


# 106TS

Canister Load Cell



## Specifications

**Rated Capacities:** 50Klb, 100Klb, SE30t, 30t

**Full Scale Output:** 2.0 mV/V  $\pm$  0.1%

**Zero Balance:**  $\pm$  0.02 mV/V

**Non-linearity:**  $< \pm$  0.030%

**Repeatability:**  $< \pm$  0.017%

**Safe Overload:** 150% of full scale

**Creep in 30 min:**  $< \pm$  0.020%

**Compensated Temperature Range:** -10 C° to 50 C° / 14 F° to 122F°

**Certifications:** OIML MAA C3, Y=16 000  
NTEP 1:10 000 Class III, Multiple Cell

**Seal Type:** Welded sealed

**IP Rating:** IP68

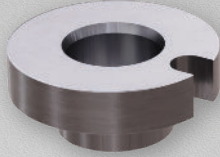
## Features

- Stainless steel, heavy-duty construction.
- 3 mounting cap variations for easy retrofit
- Power Cell 760, MTX and PDX
- Ideal for high-capacity & industrial applications such as truck scales, rail scales, hopper and soli weighing.
- Versatile and reliable.

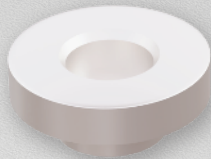




F106TS-2A



MB106TS-C1-YZ



MC106TS-C1-YZ

MC106TS-C1-YZ

106TS Load Cell

MB106TS-C1-YZ



## Description

The 106TS is an OIML and NTEP-certified stainless steel IP68 canister load cell. The heavy-duty construction of the load cell offers excellent performance even under harsh conditions. Common applications include truck scales, rail scales, hopper & silo weighing, and other high-capacity/industrial needs. The 106TS is interchangeable with Coti-Global CG-26S7 and Mettler-Toledo 0782, PowerCell 760, MTX, and PDX. Mounting hardware to be ordered separately.

## Diagram - 106TS

