

106TS

Canister Load Cell

IP68

STAINLESS STEEL
HERMETICALLY SEALED

Options:

- FM, ATEX, IECEx Approved



Mounting Cups

Included with Module

A



B



C



Clamp



Rubber Shield





Complete Kit Includes

- ✓ 106TS Load Cells
- ✓ Mounting Cups
- ✓ Junction Box (Signal or Exc)
- ✓ Load Cell Cable

Features

- Heavy Duty Construction
- Interchangeable with Coti-Global CG-26S7, Mettler-Toledo 0782, Powercell 760, MTX and PDX.
- Includes rubber shield and clamps

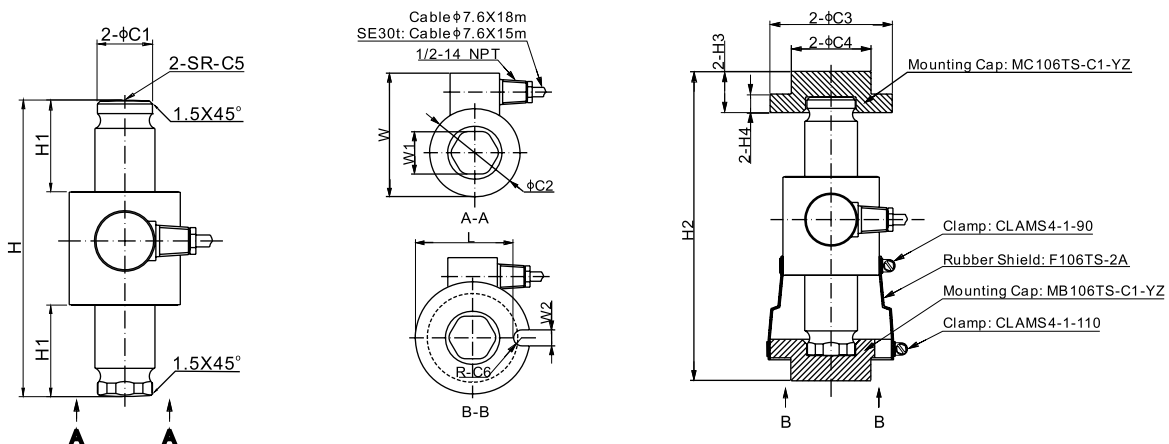
Applications

- Conversion on Truck Scales, Rail Scales, Hopper & Silo Weighing and other high capacity needs

MK6 J-Box: Signal Trim Main Board Only; Stainless Steel Junction Boxes (Signal or Excitation) available
MK8 J-Box: Stainless Steel or Fiberglass, Signal or Excitation available
MK12 J-Box: Stainless Steel or Fiberglass, Signal or Excitation available

Part Number / Capacity	J-Box	Cable
6 Module Kit	*J-Box (specify model when ordering)	
MK6-106TS- 50Klb -YZ	J06S-E-21-MB	1 roll (100ft/30m)
MK6-106TS- 100Klb -YZ		
MK6-106TS- 30t -YZ		
MK6-106TS- SE30t -YZ		
MK6-106TS- SE50t -YZ		
8 Module Kit	*J-Box (specify model when ordering)	
MK8-106TS- 50Klb -YZ	J08SS	1 roll (100ft/30m)
MK8-106TS- 100Klb -YZ		
MK8-106TS- 30t -YZ		
MK8-106TS- SE30t -YZ		
MK8-106TS- SE50t -YZ		
12 Module Kit	*J-Box (specify model when ordering)	
MK12-106TS- 50Klb -YZ	J12SS	1 roll (100ft/30m)
MK12-106TS- 100Klb -YZ		
MK12-106TS- 30t -YZ		
MK12-106TS- SE30t -YZ		
MK12-106TS- SE50t -YZ		

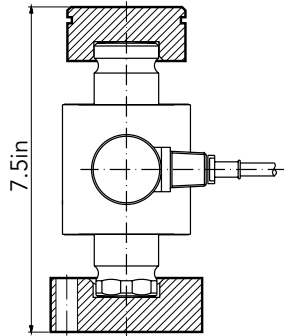
Drawings (With C Mounting Cups)



Dimensions (inches)

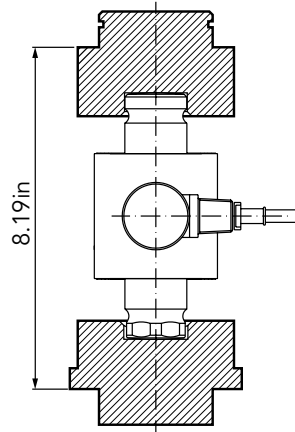
Capacity	C1	C2	C3	C4	C5	C6	H	H1	H2	H3	H4	L	W	W1	W2
50-100Klb	1.48	2.95	3.74	2.44	11.02	0.27	7.88	2.43	9.41	1.25	0.56	3.21	4.12	1.41	0.53

PDX MT Retrofit Kit



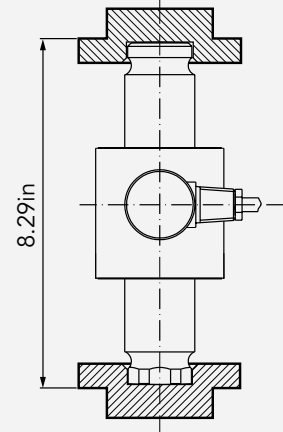
A - SE30t, SE50t

PDX *Thicker Option*



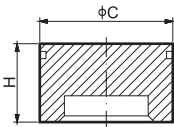
B - SE30t, SE50t

MTX MT Retrofit Kit (**Analogue**)

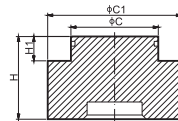


C - 50Klb, 100Klb, 30t, SE30t, SE50t

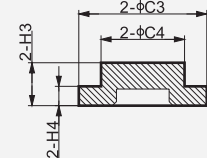
A Cap



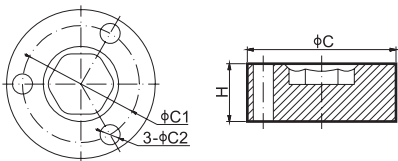
B Cap



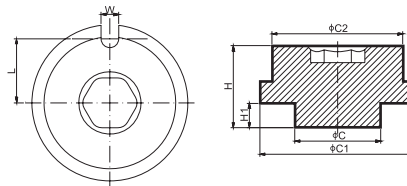
C Cap



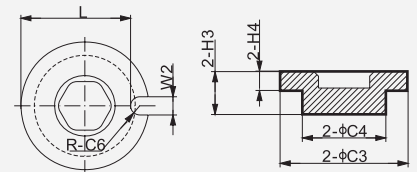
A Base



B Base



C Base



Cup Type		C	C1	C2	C3	C4	C6	H	H1	H3	H4	L	W	W2
A	Cap	2.73	-	-	-	-	7.5	-	-	-	-	-	-	-
	Base	3.50	2.75	0.50	-	-	7.5	-	-	-	-	-	-	-
B	Cap	2.73	3.75	-	-	-	-	2.50	0.86	-	-	-	-	-
	Base	2.73	4.13	3.75	-	-	-	2.50	0.86	-	-	1.82	0.50	-
C	Cap	-	-	-	3.74	2.44	0.27	-	-	1.25	0.56	3.21	-	0.53
	Base	-	-	-	3.74	2.44	0.27	-	-	1.25	0.56	3.21	-	0.53

ANYLOAD[®]

CANADA & USA
1-855-269-5623
www.anyload.com