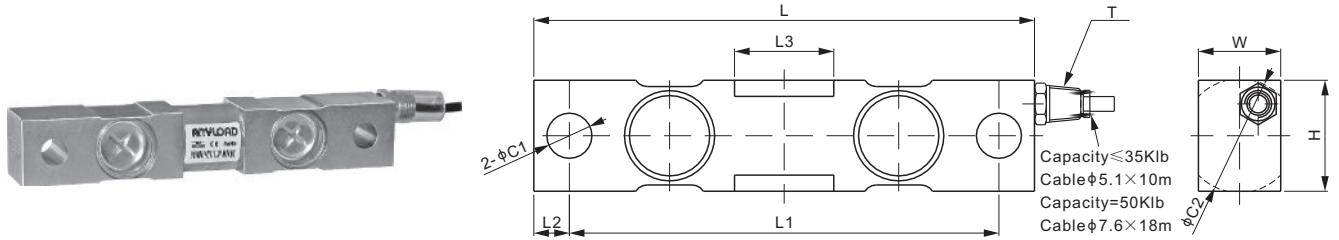


Stainless Steel



DOUBLE ENDED BEAMS

DIMENSIONS

RATED CAPACITY	C1	C2	H	L	L1	L2	L3	W	T
Klb/inches									
2.5-5	0.50	1.26	1.26	7.50	6.25	0.62	1.22	1.26	1/4-18 NPT
10-25	0.79	1.99	1.94	8.74	7.50	0.62	1.73	1.44	1/4-18 NPT
35	0.79	2.50	2.50	8.74	7.50	0.62	1.73	1.50	1/4-18 NPT
50	1.31	2.99	2.95	13.50	11.50	1.00	3.15	2.44	1/2-14 NPT
kg/mm (conversion of above dimensions)									
1,134-2,268	12.7	32.0	32.0	190.5	158.8	15.9	31.0	32.0	1/4-18 NPT
4,535.9-11,339.8	20.0	50.5	49.2	222.0	190.5	15.8	44.0	36.5	1/4-18 NPT
15,875.7	20.0	63.5	63.5	222.0	190.5	15.8	44.0	38.1	1/4-18 NPT
22,679.6	33.3	76.0	75.0	343.0	292.0	25.5	80.0	62.0	1/2-14 NPT

SPECIFICATIONS

Full Scale Output	3.0 mV/V ± 0.25%	Recommended Excitation	10V (15V Maximum)
Zero Balance	± 0.02 mV/V	Insulation Resistance	>2 [50V DC] GΩ
Non-linearity	< ± 0.050%	Compensated Temperature Range	-10°C to 50°C / 14°F to 122°F
Repeatability	< ± 0.030%	Safe Overload	150% of full scale
Hysteresis Error	< ± 0.030%	Breaking Overload	300% of full scale
Creep in 30 min.	< ± 0.030%	Seal Type / IP Rating	Welded Seal / IP68
Input Resistance	700Ω ± 10	Cable Color Code	Exc+ Red Exc- Black
Output Resistance	700Ω ± 5		Sig+ Green Sig- White
Element Material	17-4PH Stainless Steel		Shield Bare

PART NUMBER*

Rated Capacity	Part No.	Weight (kg) Approx.
2.5Klb	102ES-2.5Klb	1.7
5Klb	102ES-5Klb	1.7
10Klb	102ES-10Klb	2.9
15Klb	102ES-15Klb	2.9
25Klb	102ES-25Klb	2.9
35Klb	102ES-35Klb	3.6
50Klb	102ES-50Klb	10.5

* ATEX, FM, IECEx approved versions carry the "-Ex" suffix.

WEIGH MODULE

Model	Page
102ESM2	145

INTERCHANGEABLE REFERENCE

Manufacturer	Model
Coti Global	CG-16-SSW
Rice Lake	RL75016SS
Rice Lake	RL75016WHE*
Mettler Toledo	SLD525
Vishay Celtron	DSR-SS
Vishay Revere Transducers	9203
Vishay Sensortronics	65016W
Vishay Sensortronics	65016WH*

* Hermetically sealed.