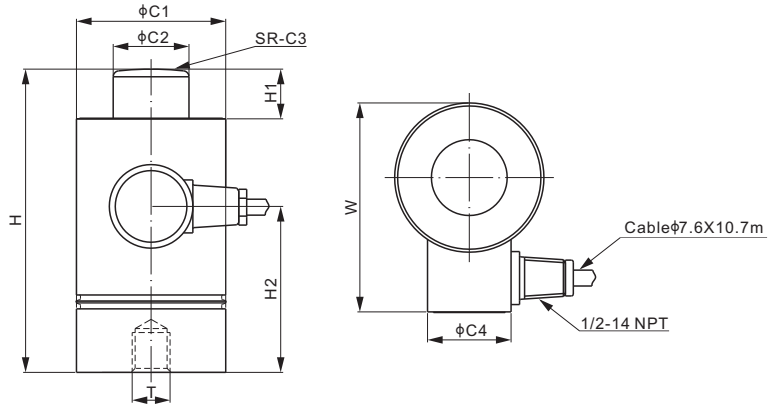


# 106PS; 106PS20



## Stainless Steel



### DIMENSIONS

RATED CAPACITY	C1	C2	C3	C4	H	H1	H2	W	T
<b>Klb/inches</b>									
50	2.95	1.50	6.00	1.65	6.00	0.98	3.28	4.13	3/4-16 UNF Depth 0.59
100	3.94	1.75	12.00	1.65	8.50	1.10	4.76	5.12	3/4-16 UNF Depth 0.59
<b>kg/mm</b> (conversion of above dimensions)									
22,679.6	75	38.1	152.4	42	152.4	25	83.4	105	3/4-16 UNF Depth 15
45,359.2	100	44.5	304.8	42	215.9	28	121	130	3/4-16 UNF Depth 15

### SPECIFICATIONS

<b>Full Scale Output</b>	106PS: 3.0 mV/V ± 0.1%	<b>Recommended Excitation</b>	10V (15V Maximum)
	106PS20: 2.0 mV/V ± 0.1%		<b>Insulation Resistance</b>
<b>Zero Balance</b>	± 0.02 mV/V	<b>Compensated Temperature Range</b>	-10°C to 50°C / 14°F to 122°F
<b>Non-linearity</b>	< ± 0.030%	<b>Safe Overload</b>	150% of full scale
<b>Repeatability</b>	< ± 0.017%	<b>Breaking Overload</b>	300% of full scale
<b>Hysteresis Error</b>	< ± 0.017%	<b>Seal Type / IP Rating</b>	Welded Seal / IP68
<b>Creep in 30 min.</b>	< ± 0.030%	<b>Cable Color Code</b>	Exc+ Red      Exc- Black Sig+ Green    Sig- White Shield Bare
<b>Input Resistance</b>	350 Ω ± 3.5		
<b>Output Resistance</b>	350 Ω ± 3.5		
<b>Element Material</b>	2Cr13 Stainless Steel		

### PART NUMBER\*

Rated Capacity	Part No.	Weight (kg) Approx.
50Klb.....	106PS-50Klb-YZ.....	3.8
	106PS20-50Klb-YZ.....	3.8
100Klb.....	106PS-100Klb-YZ.....	7.1
	106PS20-100Klb-YZ.....	7.1

\* ATEX, FM, IECEx approved versions carry the "-Ex" suffix.

### INTERCHANGEABLE REFERENCE

Manufacturer	Model
<b>106PS</b>	
Coti Global.....	CG-93
Vishay Revere Transducers.....	93
<b>106PS20</b>	
Coti Global.....	CG-92
Vishay Revere Transducers.....	92