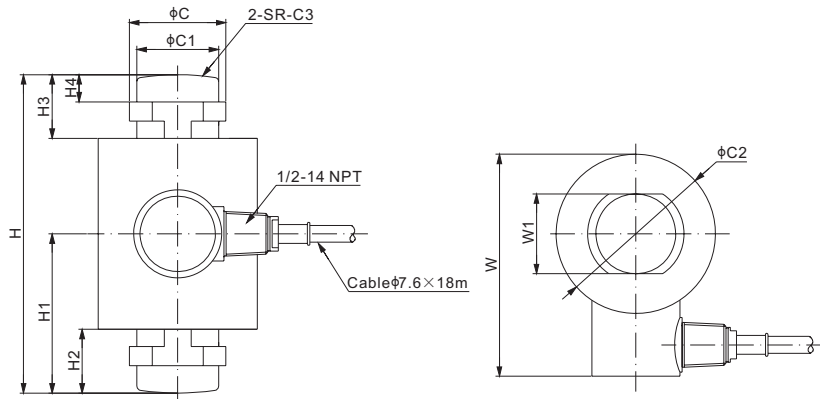


Stainless Steel



Mounting hardware to be ordered separately.

DIMENSIONS

RATED CAPACITY	C	C1	C2	C3	H	H1	H2	H3	H4	W	W1
t/mm											
7.5-22.5	34.0	28.0	65.0	100.0	89.0	44.5	19.7	19.7	11.0	95.3	28.0
30	45.8	39.0	75.0	120.0	140.0	75.0	32.0	32.0	13.0	105.3	39.0
40	45.8	39.0	75.0	180.0	150.0	80.0	37.0	37.0	13.0	106.0	39.0
50	56.5	44.0	99.0	280.0	178.0	94.0	34.0	34.0	17.0	129.0	44.0
100	70.0	62.0	99.0	380.0	200.0	100.0	34.0	34.0	17.0	129.0	62.0
lb/inches (conversion of above dimensions)											
16,534.7-49,604.0	1.34	1.10	2.56	3.94	3.50	1.75	0.78	0.78	0.43	3.75	1.10
66,138.7	1.80	1.54	2.99	4.72	5.51	2.95	1.26	1.26	0.51	4.15	1.54
88,184.9	1.80	1.54	2.99	7.09	5.91	3.15	1.46	1.46	0.51	4.17	1.54
110,231.1	2.22	1.73	3.90	11.02	7.01	3.70	1.34	1.34	0.67	5.08	1.73
220,462.3	2.76	2.44	3.90	14.96	7.87	3.94	1.34	1.34	0.67	5.08	2.44

SPECIFICATIONS

Full Scale Output	2.0 mV/V ± 0.1%	Element Material	2Cr13 Stainless Steel
Zero Balance	± 0.02 mV/V	Recommended Excitation	10V (15V Maximum)
Non-linearity	Cap. ≤ 50t: < ± 0.023%;	Insulation Resistance	> 2 [50V DC] GΩ
	Cap. = 100t: < ± 0.05%	Compensated Temperature Range	-10°C to 50°C / 14°F to 122°F
Repeatability	< ± 0.017%	Safe Overload	150% of full scale
Hysteresis Error	Cap. ≤ 50t: < ± 0.020%;	Breaking Overload	300% of full scale
	Cap. = 100t: < ± 0.05%	Seal Type / IP Rating	Welded Seal / IP68
Creep in 30 min.	< ± 0.020%	Cable Color Code	Exc+ Red Exc- Black Sig+ Green Sig- White Shield Bare
Input Resistance	1150Ω ± 50		
Output Resistance	1000Ω ± 2		

PART NUMBER*

Load Cell	Part No.	Weight Approx. (kg)
Rated Capacity		
7.5t.....	106RS-7.5t-YZ.....	1.5
15t.....	106RS-15t-YZ.....	1.5
22.5t.....	106RS-22.5t-YZ.....	1.5
30t.....	106RS-30t-YZ.....	4.2
40t.....	106RS-40t-YZ.....	3.9
50t.....	106RS-50t-YZ.....	5.2
100t.....	106RS-100t-YZ.....	6.2

*ATEX, FM, IECEx approved versions carry the "-Ex" suffix.

INTERCHANGEABLE REFERENCE

Brand	Model
Coti Global.....	CG-26S6
FAIRBANKS.....	LCF HR4020-2A(30t), part number 70510
FLINTEC.....	RC3*

*: Not included 100t



10t-50t: NTEP 1:10 000 Class III L, Multiple Cell

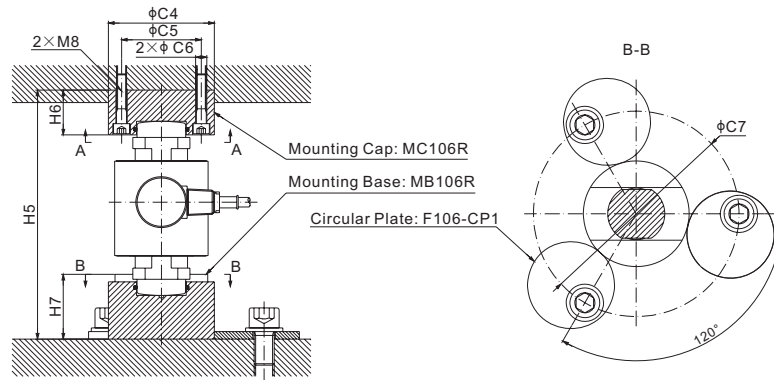
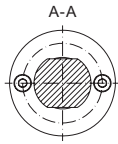


10t-50t: OIML MAA C3, Y=16 000

For further available P/N's & specifications per NTEP/OIML classes, please contact us.

Mounting Cups Type A:

Material of mounting cups and circular plate: alloy steel



DIMENSIONS

RATED CAPACITY	C4	C5	C6	C7	H5	H6	H7
t/mm							
30	85.0	64.0	9.0	165.0	200.0	36.0	52.0
40	85.0	64.0	9.0	165.0	200.0	36.0	42.0
50	90.0	70.0	9.0	170.0	240.0	45.0	55.0
lb/inches (conversion of above dimensions)							
66,138.7	3.35	2.52	0.35	6.50	7.87	1.42	2.05
88,184.9	3.35	2.52	0.35	6.50	7.87	1.42	1.65
110,231.1	3.55	2.76	0.35	7.70	9.46	1.77	2.17

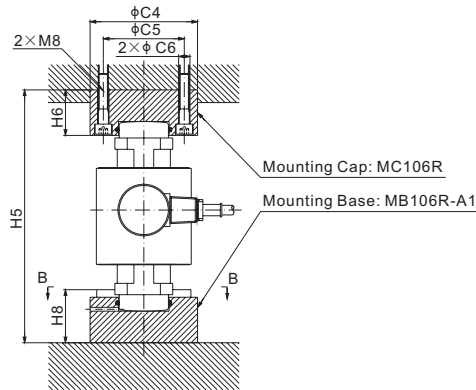
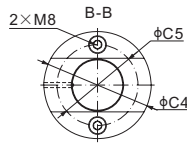
Rated Capacity**	Part Number Mounting Cap*	Weight Approx. (Kg)	Part Number Mounting Base*	Weight Approx. (Kg)
30t	MC106RH-(30-40)t	1.4	MB106RH-30t	2.1
40t			MB106RH-40t	1.6
50t	MC106RH-50t	2.0	MB106RH-50t	2.2

* When ordering mounting hardware, each load cell needs 1 x cap, 1 x base, 3 x circular plates.

** Same circular plates for 30t, 40t, 50t. F106-CP1-H, self weight: 1.2 kg each (approx)

Mounting Cups Type A1:

Material of mounting cups: alloy steel



DIMENSIONS

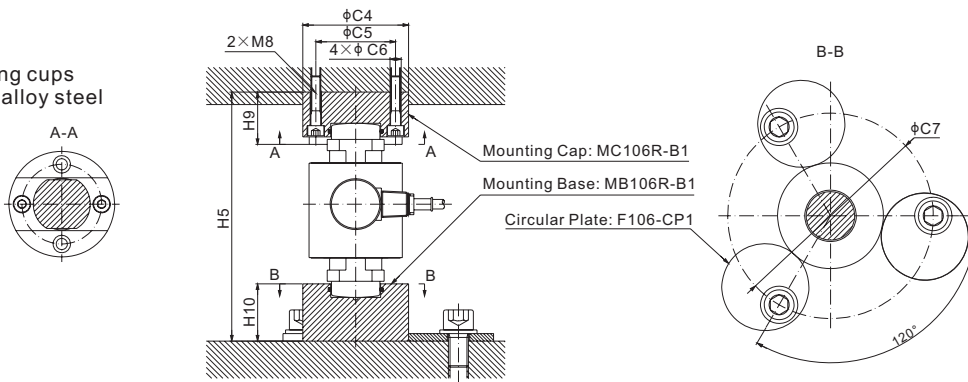
RATED CAPACITY	C4	C5	C6	H5	H6	H8
t/mm						
30	85.0	64.0	9.0	200.0	36.0	52.0
40	85.0	64.0	9.0	200.0	36.0	42.0
50	90.0	70.0	9.0	240.0	45.0	55.0
lb/inches (conversion of above dimensions)						
66,138.7	3.35	2.52	0.35	7.87	1.42	2.05
88,184.9	3.35	2.52	0.35	7.87	1.42	1.65
110,231.1	3.55	2.76	0.35	9.46	1.77	2.17

Rated Capacity	Part Number Mounting Cap*	Weight Approx. (Kg)	Part Number Mounting Base*	Weight Approx. (Kg)
30t	MC106RH-(30-40)t	1.4	MB106RH-30t-A1	2.1
40t			MB106RH-40t-A1	1.6
50t	MC106RH-50t	2.0	MB106RH-50t-A1	2.2

* When ordering mounting hardware, each load cell needs 1 x cap, 1 x base.

Mounting Cups Type B:

Material of mounting cups
and circular plate: alloy steel



DIMENSIONS

RATED CAPACITY	C4	C5	C6	C7	H5	H9	H10
t/mm							
30	85.0	64.0	9.0	165.0	200.0	42.0	46.0
40	85.0	64.0	9.0	165.0	200.0	42.0	36.0
50	90.0	70.0	9.0	170.0	240.0	55.0	45.0
lb/inches (conversion of above dimensions)							
66,138.7	3.35	2.52	0.35	6.50	7.87	1.65	1.81
88,184.9	3.35	2.52	0.35	6.50	7.87	1.65	1.42
110,231.1	3.55	2.76	0.35	7.70	9.46	2.17	1.77

Rated Capacity**	Part Number Mounting Cap*	Weight Approx. (Kg)	Part Number Mounting Base*	Weight Approx. (Kg)
30t	MC106RH-(30-40)t-B1	1.4	MB106RH-30t-B1	2.1
40t			MB106RH-40t-B1	1.6
50t	MC106RH-50t-B1	2.0	MB106RH-50t-B1	2.2

* When ordering mounting hardware, each load cell needs 1 x cap, 1 x base, 3 x circular plates.

**Same circular plates for 30t, 40t, 50t. F106-CP1-H, self weight: 1.2 kg each (approx)