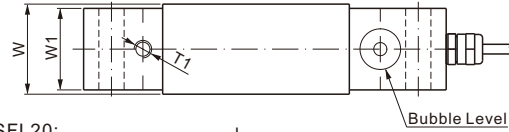
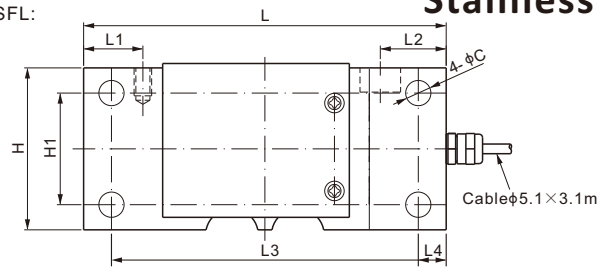
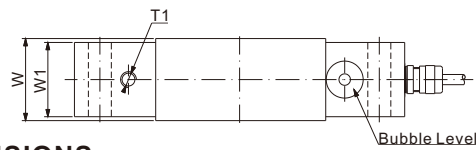
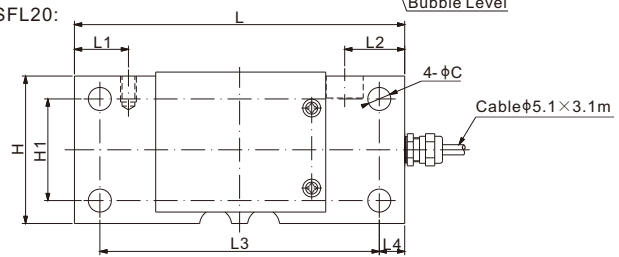




108QSFL:



108QSFL20:



DIMENSIONS

| RATED CAPACITY | C | H | H1 | L | L1 | L2 | L3 | L4 | W | W1 | T1 |
|---|------|------|------|-------|------|------|-------|------|------|------|-----------------------|
| lb/inches | | | | | | | | | | | |
| 250 | 0.45 | 2.90 | 2.00 | 6.50 | 1.06 | 1.18 | 5.50 | 0.50 | 1.61 | 1.46 | 5/16-18 UNC Depth13 |
| kg/mm (conversion of above dimensions) | | | | | | | | | | | |
| 113.4 | 11.5 | 73.7 | 50.8 | 165.1 | 27.0 | 30.0 | 139.7 | 12.7 | 41.0 | 37.1 | 5/16-18 UNC Depth0.51 |

| SPECIFICATIONS | | | |
|-------------------|-----------------------|-------------------------------|---|
| Full Scale Output | 1.0 mV/V ± 10% | Recommended Excitation | 10V (15V Maximum) |
| Zero Balance | ± 0.02 mV/V | Reference Max. Platform Size | 400×450 mm |
| Non-linearity | < ± 0.020% | Insulation Resistance | >2 [50V DC] GΩ |
| Repeatability | < ± 0.020% | Compensated Temperature Range | -10°C to 50°C / 14°F to 122°F |
| Hysteresis Error | < ± 0.020% | Safe Overload | 150% of full scale |
| Creep in 30 min. | < ± 0.030% | Breaking Overload | 300% of full scale |
| Input Resistance | 385 Ω ± 15 | Seal Type / IP Rating | Environmentally Sealed / IP66 |
| Output Resistance | 350 Ω ± 3 | Cable Color Code | Exc+ Red Exc- Black Sig+ Green Sig- White Shield Bare |
| Element Material | 2Cr13 Stainless Steel | | |

| PART NUMBER* | | |
|----------------|--------------------------|---------------------|
| Rated Capacity | Part No. | Weight Approx. (kg) |
| 250lb..... | 108QSFL-250lb-YZ..... | 2.6 |
| | 108QSFL-250lb-YZ-01..... | 2.6 |

Output 2.0mV/V ± 10% Version*:
 250lb.....108QSFL20-250lb-YZ-01.....2.6

This version is not interchange with FLS or RLFLS
 Reference Max. Platform Size: 609x609mm

*ATEX, FM, IECEx approved versions carry the "-Ex" suffix.

| INTERCHANGEABLE REFERENCE | |
|---------------------------|-------|
| Brand | Model |
| Avery Weigh-Tronix..... | FLS |
| Rice Lake..... | RLFLS |

SINGLE POINTS