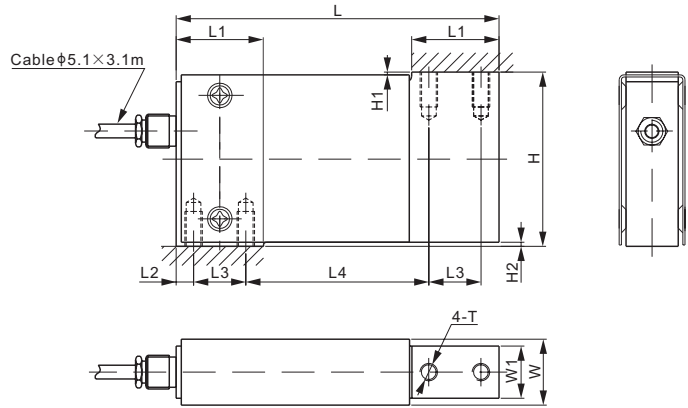


# 108TSST



## Stainless Steel



### DIMENSIONS

RATED CAPACITY	H	H1	H2	L	L1	L2	L3	L4	W	W1	T
<b>lb/inches</b>											
10-100	2.50	0.04	0.06	4.63	1.25	0.25	0.75	2.63	0.95	0.75	1/4-28 UNF-2B Depth0.5
<b>kg/mm</b> (conversion of above dimensions)											
4.54-45.4	63.5	1.0	1.5	117.6	31.8	6.40	19.0	66.7	24.1	19.0	1/4-28 UNF-2B Depth12.7

### SPECIFICATIONS

<b>Full Scale Output</b>	2.0 mV/V ± 10%	<b>Recommended Excitation</b>	10V (15V Maximum)
<b>Zero Balance</b>	± 0.02 mV/V	<b>Reference Max. Platform Size</b>	Capacity ≤ 25lb: 200 × 250 mm Capacity ≥ 50lb: 300 × 300 mm
<b>Non-linearity</b>	< ± 0.017%	<b>Insulation Resistance</b>	> 2 [ 50V DC ] GΩ
<b>Repeatability</b>	< ± 0.017%	<b>Compensated Temperature Range</b>	-10°C to 50°C / 14°F to 122°F
<b>Hysteresis Error</b>	< ± 0.017%	<b>Safe Overload</b>	150% of full scale
<b>Creep in 30 min.</b>	< ± 0.023%	<b>Breaking Overload</b>	300% of full scale
<b>Input Resistance</b>	385Ω ± 15	<b>Seal Type / IP Rating</b>	Environmentally Sealed / IP66
<b>Output Resistance</b>	350Ω ± 5	<b>Cable Color Code</b>	Exc+ Red    Exc- Black Sig+ Green    Sig- White    Shield Bare
<b>Element Material</b>	2Cr13 Stainless Steel		

### PART NUMBER\*

Rated Capacity	Part No.	Weight Approx. (kg)
10lb.....	108TSST-10lb-YZ.....	0.9
15lb.....	108TSST-15lb-YZ.....	0.9
25lb.....	108TSST-25lb-YZ.....	0.9
50lb.....	108TSST-50lb-YZ.....	0.9
100lb.....	108TSST-100lb-YZ.....	0.9

\* ATEX, FM, IECEx approved versions carry the "-Ex" suffix.

### INTERCHANGEABLE REFERENCE

Brand	Model
Coti Global.....	CG-51
Vishay Sensortronics.....	60051

SINGLE POINTS