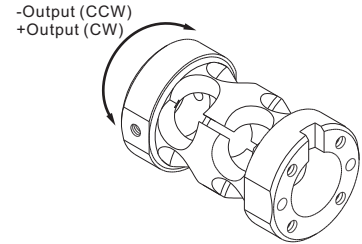
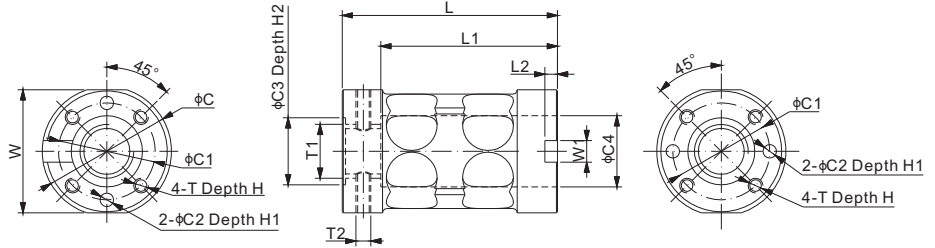
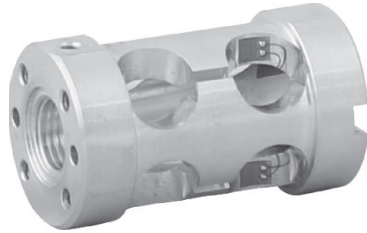


112BA

Aluminum



FORCE MEASUREMENT LOAD CELL



DIMENSIONS

RATED CAPACITY	C	C1	C2	C3	C4	H	H1	H2	L	L1	L2	W	W1	T	T1	T2
in-oz/inches																
20in-oz~100in-lb	1.20	0.90	0.125	0.62	0.66	0.25	0.25	0.03	2.00	1.64	0.12	1.14	0.20	#6-32UNC	1/2-20 UNF	#6-32UNC
Nm/mm																
0.14~11.3	30.5	22.9	3.2	15.8	16.8	6.4	6.4	0.8	50.8	41.7	3.0	29.0	5.1	M3	M12	M3

SPECIFICATIONS

Full Scale Output	2.0 mV/V ± 20%	Element Material	Aluminum
Zero Balance	± 0.04 mV/V	Recommended Excitation	10V (15V Maximum)
Non-linearity	< ± 0.2%	Insulation Resistance	>2 [50V DC] GΩ
Repeatability	< ± 0.05%	Nominal Temperature Range	-10°C to 40°C / 14°F to 104°F
Hysteresis Error	< ± 0.2%	Safe Overload	150% of full scale
Creep in 30 min.	< ± 0.2%	Breaking Overload	300% of full scale
Input Resistance	1000Ω ± 50	Seal Type / IP Rating	Environmentally Sealed / IP65
Output Resistance	1000Ω ± 5	Cable	No Cable

PART NUMBER*

Rated Capacity	Part No.	Weight (kg) Approx.
20in-oz.....	112BA-20in-oz.....	0.07
50in-oz.....	112BA-50in-oz.....	0.07
12in-lb.....	112BA-12in-lb.....	0.07
50in-lb.....	112BA-50in-lb.....	0.07
100in-lb.....	112BA-100in-lb.....	0.07
0.14Nm.....	112BA-0.14Nm.....	0.07
0.35Nm.....	112BA-0.35Nm.....	0.07
1.5Nm.....	112BA-1.5Nm.....	0.07
5.6Nm.....	112BA-5.6Nm.....	0.07
11.3Nm.....	112BA-11.3Nm.....	0.07

* ATEX, FM, IECEx approved versions carry the "-Ex" suffix.