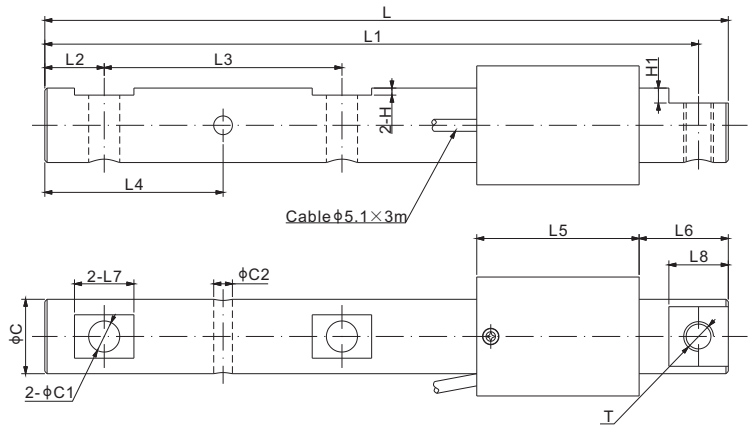


563WS-WBL



Stainless Steel

SINGLE ENDED BEAMS



DIMENSIONS

RATED CAPACITY	C	C1	C2	H	H1	L	L1	L2	L3	L4	L5	L6	L7	L8	T
lb/inches															
1250	1.25	0.52	0.31	0.25	0.12	11.50	11.00	1.00	4.00	3.00	2.73	1.50	1.00	1.00	1/2-13 UNC-2B
kg/mm (conversion of above dimensions)															
567.0	31.8	13.3	8.0	6.4	3.0	292.1	279.4	25.4	101.6	76.2	69.4	38.1	25.4	25.4	1/2-13 UNC-2B

SPECIFICATIONS

Full Scale Output	2.0 mV/V \pm 0.25%	Recommended Excitation	10V (15V Maximum)
Zero Balance	\pm 0.02 mV/V	Insulation Resistance	>2 [50V DC] G Ω
Non-linearity	< \pm 0.05%	Nominal Temperature Range	-10°C to 50°C / 14°F to 122°F
Repeatability	< \pm 0.03%	Safe Overload	150% of full scale
Hysteresis Error	< \pm 0.05%	Breaking Overload	300% of full scale
Creep in 30 min.	< \pm 0.03%	Seal Type / IP Rating	Environmentally Sealed / IP67
Input Resistance	350 Ω \pm 7	Cable Color Code	Exc+ Red Exc- Black Sig+ Green Sig- White Shield Bare
Output Resistance	350 Ω \pm 3		
Element Material	2Cr13 Stainless Steel		

PART NUMBER*

Rated Capacity	Part No.	Weight (kg) Approx.
1.25Klb.....	563WS-1.25Klb-YZ-WBL.....	2.25

* ATEX, FM, IECEx approved versions carry the "-Ex" suffix.

INTERCHANGEABLE PRODUCTS

Manufacturer	Model
Avery Weigh-Tronix.....	Weigh Bar
Coti-Global.....	CG-WBL-SS-1.25Klb
Rice Lake.....	RL32011WB-T-1.25Klb