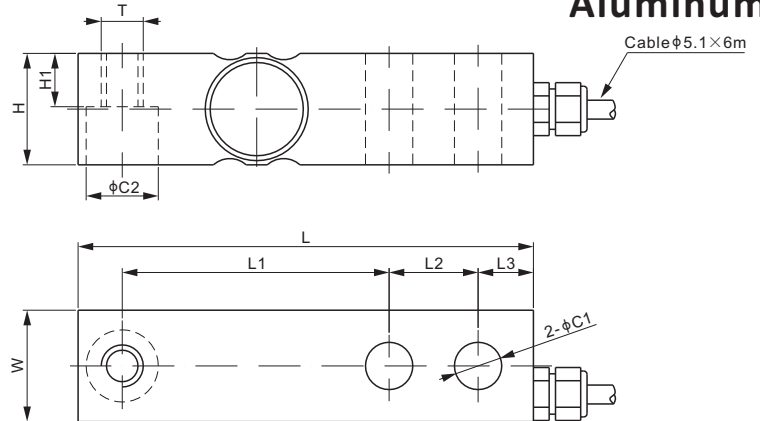




Aluminum



SINGLE ENDED BEAMS



DIMENSIONS

RATED CAPACITY	C1	C2	H	H1	L	L1	L2	L3	T	W
lb/inches										
200; 300	0.53	0.81	1.25	0.60	5.12	3.00	1.00	0.62	1/2-20 UNF-2B	1.25
kg/mm (conversion of above dimensions)										
90.7; 136.1	13.5	20.6	31.8	15.2	130	76.2	25.4	15.8	1/2-20 UNF-2B	31.8

SPECIFICATIONS

Full Scale Output	3.0 mV/V ± 0.25%	Recommended Excitation	10V (15V Maximum)
Zero Balance	± 0.02 mV/V	Insulation Resistance	>2 [50V DC] GΩ
Non-linearity	< ± 0.017%	Nominal Temperature Range	-10°C to 40°C / 14°F to 104°F
Repeatability	< ± 0.017%	Safe Overload	150% of full scale
Hysteresis Error	< ± 0.017%	Breaking Overload	300% of full scale
Creep in 30 min.	< ± 0.023%	Seal Type / IP Rating	Environmentally Sealed / IP67
Input Resistance	350 Ω ± 7	Cable Color Code	Exc+ Red Exc- Black
Output Resistance	350 Ω ± 3		Sig+ Green Sig- White
Element Material	Aluminum		Shield Bare

PART NUMBER*

Rated Capacity	Part No.	Weight (kg) Approx.
200lb.....	563YA-200lb.....	0.6
300lb.....	563YA-300lb.....	0.6

* ATEX, FM, IECEx approved versions carry the "-Ex" suffix.

INTERCHANGEABLE REFERENCE

Manufacturer	Model
Vishay Tedeo-Huntleigh	3310*

* Interchangeable with Vishay Tedeo-Huntleigh 3310 imperial thread