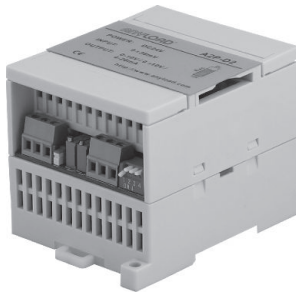
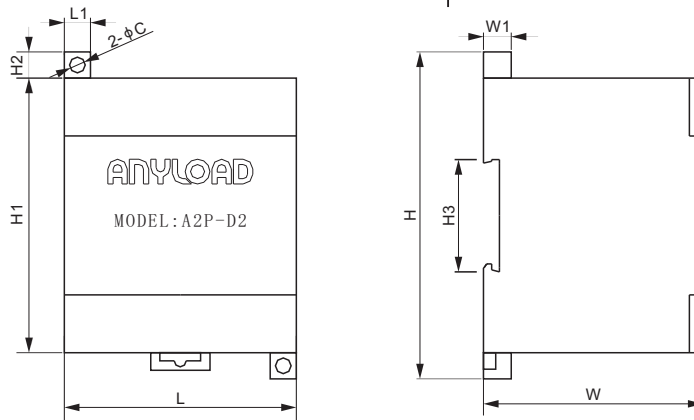


Analogue Amplifier



Features:

- High & low temperature accuracy and high stability
- Can be connected directly to 1 or 2 load cells or connected up to 8 x 350Ω load cells through a junction box
- Support multiple magnification range, two types of excitation voltage available
- Anti-EFT (Electrical Fast Transient pulses) interference & anti-radiation interference



DIMENSIONS

	C	H	H1	H2	H3	L	L1	W	W1
mm	4.8	100	84	8	35	71	8	67.2	8.5
inches	0.2	3.9	3.3	0.3	1.4	2.8	0.3	2.6	0.3

SPECIFICATIONS

Load Cell Type		All strain gage type	Linearity		≤ 0.02%
Power Supply	V DC	24	Max. Input Offset Voltage	μV	50
Input Range	mV	0 ± 36	Min. Common-mode Rejection Ratio (G=10)	dB	100
Max. Power	W	4.35	Installation		Standard rail channel (Indoor)
Output Signal	V	0 ± 10	Excitation voltage to load cell	V	5 or 12
	mA	4-20	Tare Limit		Shall not exceed 30% of full load
Voltage Full Scale	ppm/°C	50	Operating temperature range	°C / °F	-10 - 50 / 14 - 122
Temperature Drift					
Current Full Scale	ppm/°C	80			
Temperature Drift					

PART NUMBER

Part No.	*Compatibility with IO-LINK of Balluff's	Weight (kg) Approx.
A2P-D2.....	No.....	0.2
A2P-D2B.....	Yes.....	0.2

* compatible models of IO-Link of Balluff's:

- BNI IOL-709-000-K006
- BNI IOL-710-000-K006
- BNI IOL-712-000-K023
- BNI IOL-714-000-K023

CONNECTION DIAGRAM

