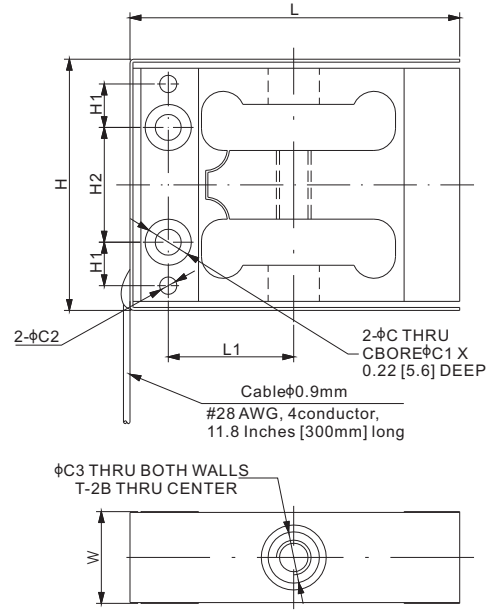


101AALS; 101ASLS



Aluminum/Stainless Steel



DIMENSIONS

RATED CAPACITY	C	C1	C2	C3	H	H1	H2	L	L1	T	W
lb/inches											
2.2-100	0.14	0.25	-	0.28	1.37	-	0.63	1.80	0.69	#10-32 UNF	0.50
200	0.14	0.25	0.09	0.28	1.37	0.22	0.63	1.80	0.69	#10-32 UNF	0.50
500	0.21	0.34	0.09	0.28	1.37	0.24	0.63	1.80	0.68	1/4-28 UNF	0.50
kg/mm (conversion of above dimensions)											
1.00-45.36	3.6	6.4	-	7.1	34.8	-	15.9	45.7	17.4	#10-32 UNF	12.7
90.72	3.6	6.4	2.4	7.1	34.8	5.5	15.9	45.7	17.4	#10-32 UNF	12.7
226.80	5.4	8.6	2.4	7.1	34.8	6.0	15.9	45.7	17.2	1/4-28 UNF	12.7

SPECIFICATIONS

Full Scale Output	2.0 mV/V \pm 20%	Element Material	Aluminum (2.2-100lb)
Zero Balance	\pm 0.02 mV/V		17-4PH stainless steel (200-500lb)
Non-linearity	< \pm 0.02% (2.2-100lb)	Recommended Excitation	10V (15V Maximum)
	< \pm 0.06% (200-500lb)	Insulation Resistance	> 0.5 [50V DC] G Ω
Repeatability	< \pm 0.02%	Nominal Temperature Range	-10°C to 40°C / 14°F to 104°F
Hysteresis Error	< \pm 0.02% (2.2-100lb)	Safe Overload	150% of full scale
	< \pm 0.06% (200-500lb)	Breaking Overload	300% of full scale
Creep in 30 min.	< \pm 0.025%	Seal Type / IP Rating	IP30
Input Resistance	1050 Ω \pm 15	Cable Color Code	Exc+ Green Exc- Black
Output Resistance	1000 Ω \pm 3		Sig+ White Sig- Red

PART NUMBER

Rated Capacity	Part No.	Weight (kg) Approx.
2.2lb.....	101AALS-2.2lb.....	0.1
5lb.....	101AALS-5lb.....	0.1
10lb.....	101AALS-10lb.....	0.1
25lb.....	101AALS-25lb.....	0.1
50lb.....	101AALS-50lb.....	0.1
100lb.....	101AALS-100lb.....	0.1
200lb.....	101ASLS-200lb.....	0.25
500lb.....	101ASLS-500lb.....	0.25

INTERCHANGEABLE PRODUCTS

Manufacturer	Model
Futek.....	LSM300