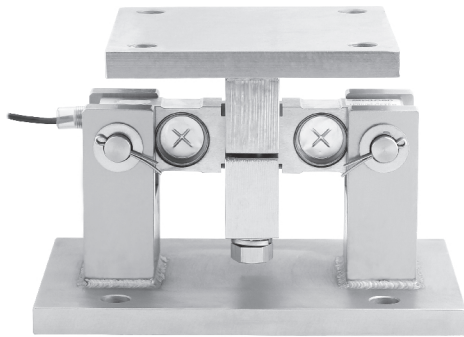


102ESM2

Stainless Steel



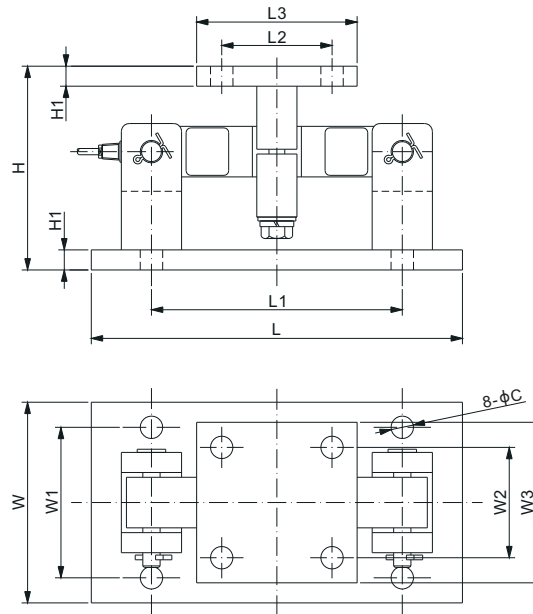
Features:

- Assembles: 102ES double ended beam load cell
- Capacities: 1Klb-25Klb
- Self-checking with anti-lifting protection

Load Cell Certifications:



Load Cell Not Included.



DIMENSIONS

| LOAD CELL CAPACITY | C | H | H1 | L | L1 | L2 | L3 | W | W1 | W2 | W3 |
|-----------------------------------------------|------|-------|------|-------|-------|-------|-------|-------|-------|-------|-------|
| Klb/inches | | | | | | | | | | | |
| 1-5 | 0.56 | 5.00 | 0.50 | 9.25 | 6.25 | 2.75 | 4.00 | 5.00 | 3.75 | 2.75 | 4.00 |
| 10-25 | 0.81 | 7.89 | 0.75 | 12.00 | 7.50 | 6.00 | 8.00 | 8.00 | 6.00 | 6.00 | 8.00 |
| kg/mm (conversion of above dimensions) | | | | | | | | | | | |
| 453.6-2,268 | 14.2 | 127.0 | 12.7 | 235.0 | 158.8 | 69.9 | 101.6 | 127.0 | 95.3 | 69.9 | 101.6 |
| 4,535.9-11,339.8 | 20.6 | 200.4 | 19.0 | 304.8 | 190.5 | 152.4 | 203.2 | 203.2 | 152.4 | 152.4 | 203.2 |

PART NUMBER

| Load Cell Capacity | Part No. | Shipping Weight (kg) Approx. |
|--------------------|-------------------------|------------------------------|
| 1Klb-5Klb | 102ESM2-(1-5)Klb | 7.7 |
| 10Klb-25Klb..... | 102ESM2-(10-25)Klb..... | 30.0 |

INTERCHANGEABLE PRODUCTS

| Manufacturer | Model |
|---------------------|-------|
| Mettler Toledo..... | VLM3S |

AVAILABLE OPTION

- Alloy steel: 102EHM2