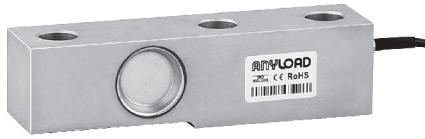


563YHFK



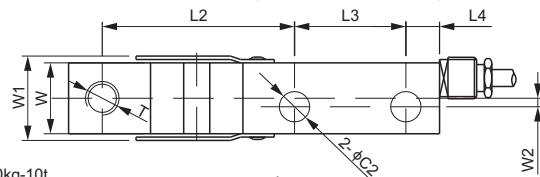
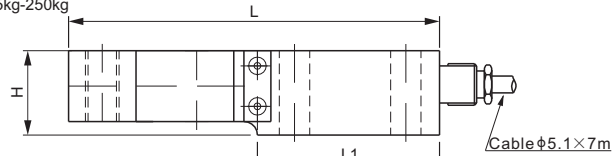
Alloy Steel



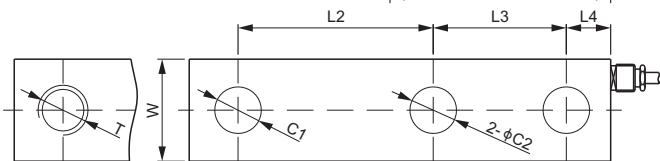
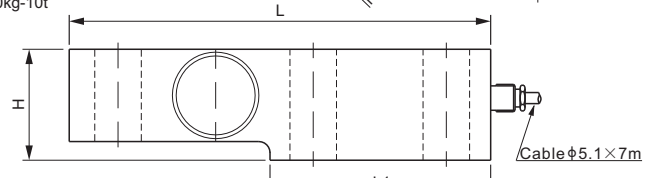
SINGLE ENDED BEAMS



Capacity: 125kg-250kg



Capacity: 500kg-10t



DIMENSIONS

RATED CAPACITY	C1	C2	H	L	L1	L2	L3	L4	W	W1	W2	T
kg/mm												
125-250	-	9	25	110	54	57	33	10	21	25	2.5	M10
500-1,000	-	11	32	125	63	61.5	38	13	29	-	-	M12
2,500-5,000	21	21	50	190	99.5	88	60	20	46	-	-	-
10,000	26	26	66	227	117	117	60	25	50	-	-	-
lb/inches (conversion of above dimensions)												
276-551	-	0.35	0.98	4.33	2.13	2.24	1.30	0.39	0.83	0.98	0.10	M10
1,102-2,205	-	0.43	1.26	4.92	2.48	2.42	1.50	0.51	1.14	-	-	M12
5,512-11,023	0.83	0.83	1.97	7.48	3.92	3.46	2.36	0.79	1.81	-	-	-
22,046	1.02	1.02	2.60	8.94	4.61	4.61	2.36	0.98	1.97	-	-	-

SPECIFICATIONS

Full Scale Output	125kg, 250kg, 500kg, 10t: 2.2 mV/V ± 0.25% 1t, 2.5t, 5t: 2.2 mV/V ± 0.05%	Recommended Excitation	10V (15V Maximum)
Zero Balance	± 0.02 mV/V	Insulation Resistance	>2 [50V DC] GΩ
Non-linearity	< ± 0.017%	Compensated Temperature Range	-10°C to 50°C / 14°F to 122°F
Repeatability	< ± 0.017%	Safe Overload	150% of full scale
Hysteresis Error	< ± 0.017%	Breaking Overload	300% of full scale
Creep in 30 min.	< ± 0.023%	Seal Type / IP Rating	Environmentally Sealed / IP67
Input Resistance	385Ω ± 15	Cable Color Code	Exc+ Red Exc- Black Sig+ Green Sig- White Shield Bare
Output Resistance	350Ω ± 3		
Element Material	Alloy Steel, Nickel Plated		

PART NUMBER

Rated Capacity	Part No.	Weight (kg) Approx.
125kg	563YHFK-125kg	0.7
250kg	563YHFK-250kg	0.7
500kg	563YHFK-500kg	1.0
1t	563YHFK-1t	1.0
2.5t	563YHFK-2.5t	2.8
5t	563YHFK-5t	3.0
10t	563YHFK-10t	4.9

INTERCHANGEABLE PRODUCTS

ANYLOAD Part No.	Kelba Model
563YHFK-125kg	KA125N
563YHFK-250kg	KA250N
563YHFK-500kg	KA500N
563YHFK-1t	KA1000N
563YHFK-2.5t	KA2500N
563YHFK-5t	KA5000N
563YHFK-10t	KA10000N

125kg-1t: NTEP 1:5 000 Class III, Single Cell;
 NTEP 1:9 500 Class III, Multiple Cell
 2.5t-5t: NTEP 1:6 000 Class III, Single Cell;
 NTEP 1:10 000 Class III, Multiple Cell
 500kg-2.5t: OIML MAA C5, Y=26 000;
 5t-10t: OIML MAA C6, Y=8 500

www.anyload.com

© 2020 ANYLOAD V1 dimensions and specifications subject to change without notice