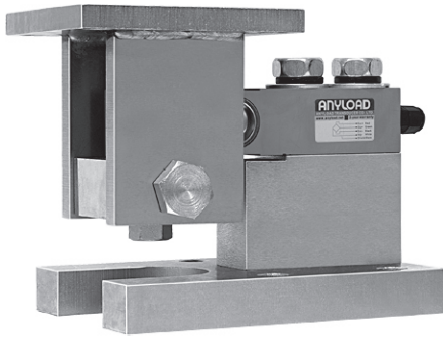


563YSM2



Stainless Steel



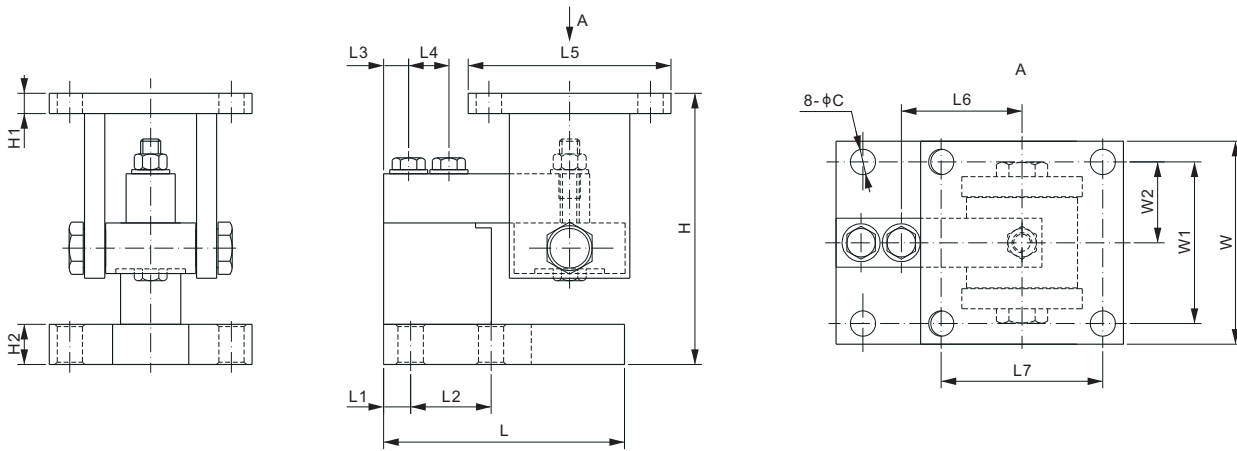
Features:

- Assembles: 563YS single ended beam load cell
- Capacities: 500lb-SE5Klb/250kg-2t
- Center pivoted and self-checking
- Tension load applied to the load cell is converted to compression load application for the weigh module

Load Cell Certifications:



Load Cell Not Included.



DIMENSIONS

LOAD CELL CAPACITY	C	H _{Min/Max}	H1	H2	L	L1	L2	L3	L4	L5	L6	L7	W	W1	W2
lb/inches															
500-4,000;SE5,000	0.63	6.50/6.69	0.50	1.00	5.98	0.67	2.00	0.62	1.00	5.04	3.00	4.02	5.04	4.02	2.01
kg/mm															
250-2,000	16.0	165.0/170.0	12.7	25.4	152.0	17.0	50.8	15.8	25.4	128.0	76.2	102.1	128.0	102.1	51.1

SE refers to small envelope

PART NUMBER

Load Cell Capacity	Part No.	Shipping Weight (kg) Approx.
500lb-SE5Klb.....	563YSM2-(0.5-SE5)Klb.....	9.1
250kg-2t.....	563YSM2-(250kg-2t).....	9.1

INTERCHANGEABLE PRODUCTS

Manufacturer	Model
Rice Lake.....	RL1800*

* H_{Min/Max} of RL1800 is 5.25/5.56 inch for 500lb to SE5Klb

WEIGH MODULES