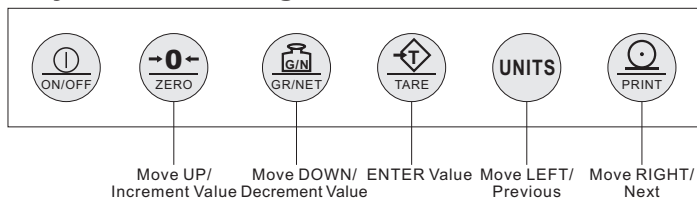


Stainless Steel SS304



Keyboard Configuration



Features:

- NTEP III/IIIL, 10 000 approved
- Measurement Canada III, 10 000; III HD 20 000
- Material: Stainless steel SS304
- IP Rating: IP66
- LCD 6-digit display
- Power Supply: External AC adaptor or rechargeable lithium batteries 7.4V/4000mA
- Parameter and calibration settings are performed on the front panel
- Units of Measurement: kg, lb, g, oz, lb:oz conversion
- Improper operation and fault indication
- Two way relay signal output
- Equipped with RS-232 and RS-485 connecting ports
- Programmable print format
- Built-in clock
- Functions: Auto zero scale, Auto zero tracking, PEAK, COUNTING, ZERO SCALE, TARE, GROSS/NET, Print interface

INDICATORS

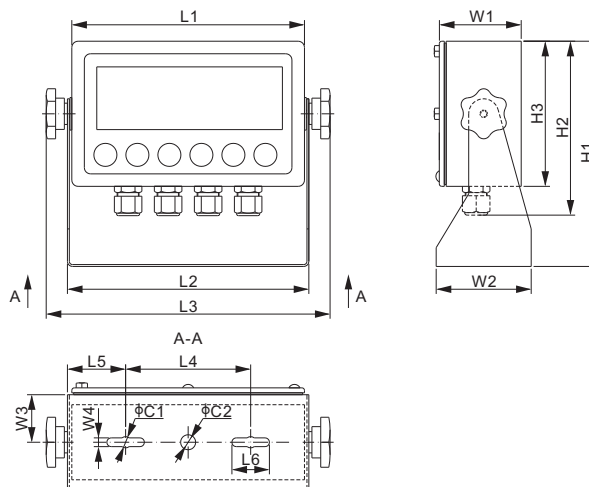
General Specifications	
Enclosure Material	Stainless Steel SS304
Units of Measurement	kg, lb, g, oz, lb:oz conversion
Working Humidity	≤90% RH
Working Temperature	-10°C to 40°C / 14°F to 104°F
Dimensions	226mm × 76mm × 181mm
	8.9in × 3.0in × 7.13in
Display Type	LCD
Display Digits	6 digits
Digit Height	25.4mm / 1in
Display Dimensions	143mm × 41mm / 5.6in × 1.6in
Power Supply	AC adaptor or rechargeable lithium batteries
	7.4V/4000mA
IP Rating	IP66

Technical Specifications	
Division	1; 2; 5; 10
Tare range	100% Full Scale
Max. Number of load cells	8 × 350Ω; 16 × 700Ω
Max. power consumption	10W
Excitation Voltage	5V DC ± 5%
Resettable fuse	1.1A
Communicate interface	RS-232, RS-485
Print interface	Serial interface
Input Range	Up to 20mV
Update Rate	20ms or 50Hz

PART NUMBER		
Part No.	Plug Type	Weight (kg) Approx.
805BS-B-17.....	Type A	2.3
805BS-CC-17.....	Type I	2.3

AVAILABLE OPTIONS

■ Lite version 805BS-TN-B available



DIMENSIONS

	C1	C2	H1	H2	H3	L1	L2	L3	L4	L5	L6	W1	W2	W3	W4
inches	0.4	0.5	7.1	5.5	4.6	7.3	7.6	8.9	3.9	1.8	1.2	2.6	3.0	1.5	0.3
mm	9	12	181	139	116	186	193	226	100	46.5	30	65	76	38	7