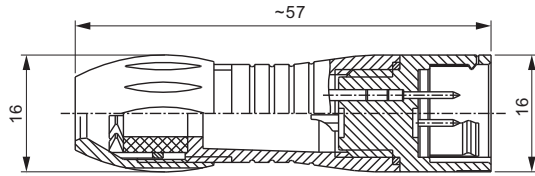
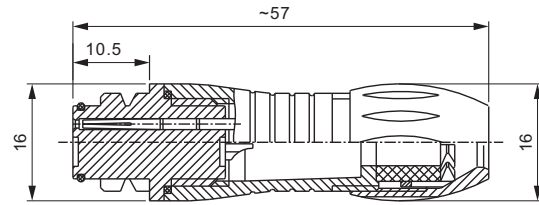


## Cable Connector



Male cable connector,  
cable outlet 4-6mm  
Contacts 3,5,8



Female cable connector,  
cable outlet 4-6mm  
Contacts 3,5,8

Dimension in mm.

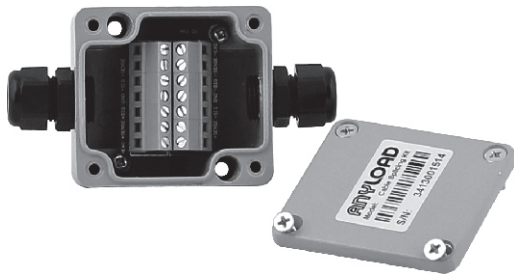
SPECIFICATIONS			
Gauge in mm <sup>2</sup>	MCC3 & MCC5: Max. 0.75; MCC8: Max. 0.25	Contact Resistance	≤ 3mΩ
Gauge in AWG	MCC3 & MCC5: Max. 20; MCC8: Max. 24	Insulation Resistance (R <sub>is</sub> )	≥ 10 <sup>10</sup> Ω
Termination	Solder	Pin Contact	Brass / CuZn
Working Temperature	-40°C to 80°C/-40°F to 176°F	Socket Contact	Bronze / CuSn
Shell Protection	IP67	Contact Plating	Gold / Au
Mechanical Operation	> 500 Mating Cycles		

PART NUMBER		
Part No.	Contacts	Shipping Weight (kg) Approx.
MCC3.....	3.....	0.01
MCC5.....	5.....	0.01
MCC8.....	8.....	0.01

CABLE, CONNECTOR & ACCESSORIES

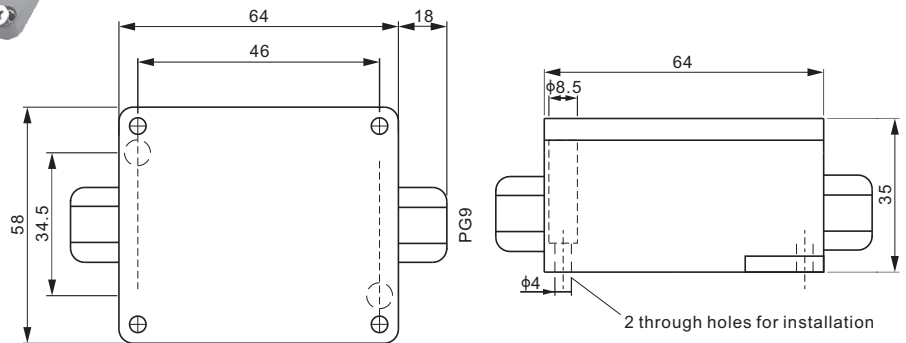
# CSK

## Cable Splicing Kit



### Features:

- Easily connects cable
- 7 connections, connects up to 6 wire
- Protects the load cell from moisture and water damage through cable connection
- Enclosure Material: Aluminum casting
- IP Protection: IP67



Dimension in mm.

PART NUMBER	
Part No.	Shipping Weight (kg) Approx.
CSK.....	0.22