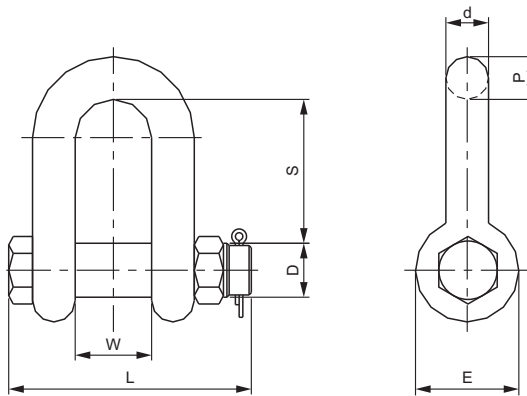




Features:

- Work Load Limit WLL: 2 tons to 110 tons
- Made of high quality alloy steel
- Maximum test load is 2 times the rated load
- Minimum breaking load is 4 times the rated load
- Products meeting ISO 2415-2004
- Smaller in size and lighter weight comparing with products of the same capacity



DIMENSIONS

PART NUMBER	WLL(t)	W	D	d	E	P	S	L	Nominal Size(inch)	Shipping Weight(kg)
mm										
TDX-2.5t	2.5	19	14	11	27	11	36.5	62	7/16	0.21
TDX-5t	5	27	20	16	38	16	51	89	5/8	0.60
TDX-12.5t	12.5	43	30	25.5	60.5	25.5	81	136.5	1	2.38
TDX-21t	21	57	39	35	84	38	111	179	1 3/8	6.71
TDX-30t	30	60.5	42	38	92	41	122	194.5	1 1/2	8.05

SHACKLES, EYEBOLTS, ROD END