

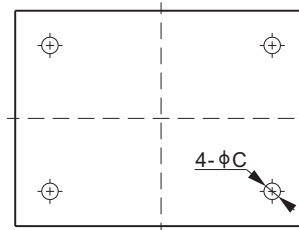
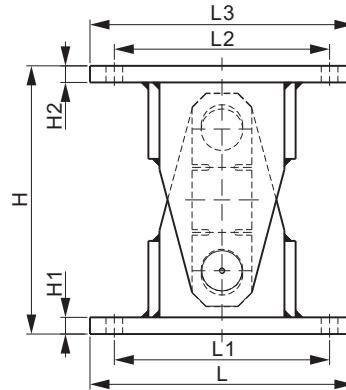
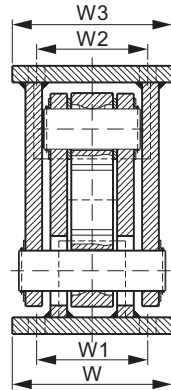
Features:

- Assembles: 110BH tension link load cell
- Capacities: 1t-75t
- Anti-lifting protection to prevent load from tipping
- Allows for free swaying movements and high accuracy load reading

Load Cell Certifications:



Load Cell Not Included.



DIMENSIONS

LOAD CELL CAPACITY	C	H	H1	H2	L	L1	L2	L3	W	W1	W2	W3
t/mm												
1	12	110	10	10	135	105	105	135	95	60	60	95
2	13	148	10	10	170	130	130	170	100	60	60	100
5	15	182	13	13	195	150	150	195	125	80	80	125
10	18	233	15	15	250	200	200	250	160	110	110	160
20	20	318	20	20	310	250	250	310	205	145	145	205
30	24	386	24	24	380	310	310	380	230	160	160	230
50	30	476	28	28	475	390	390	475	300	215	215	300
75	30	576	30	30	530	440	440	530	320	230	230	320
lb/inches (conversion of above dimensions)												
2,202.6	0.47	4.33	0.39	0.39	5.31	4.13	4.13	5.31	3.74	2.36	2.36	3.74
4,405.3	0.51	5.83	0.39	0.39	6.69	5.12	5.12	6.69	3.93	2.36	2.36	3.93
11,013.2	0.59	7.13	0.51	0.51	7.67	5.91	5.91	7.67	4.92	3.15	3.15	4.92
22,026.4	0.71	9.17	0.59	0.59	9.84	7.87	7.87	9.84	6.30	4.33	4.33	6.30
44,052.8	0.79	12.52	0.79	0.79	12.20	9.84	9.84	12.20	8.07	5.71	5.71	8.07
66,079.3	0.95	15.20	0.95	0.95	14.96	12.20	12.20	14.96	9.06	6.30	6.30	9.06
110,132.2	1.18	18.74	1.10	1.10	18.70	15.35	15.35	18.70	11.81	8.46	8.46	11.81
165,198.2	1.18	22.68	1.18	1.18	20.87	17.32	17.32	20.87	12.60	9.06	9.06	12.60

PART NUMBER

Load Cell Capacity	Part No.	Shipping Weight (kg) Approx.
1t.....	110BHM1-1t.....	3.5
2t.....	110BHM1-2t.....	5.5
5t.....	110BHM1-5t.....	10.0
10t.....	110BHM1-10t.....	21.0
20t.....	110BHM1-20t.....	47.5
30t.....	110BHM1-30t.....	80.5
50t.....	110BHM1-50t.....	153.0
75t.....	110BHM1-75t.....	222.0